

# evertrace

## RISK MODELING FOR GLOBAL SUPPLY CHAINS

Evertrace is a Machine Learning platform for real-time cargo tracking, risk prevention and damage prediction

[www.evertrace.io](http://www.evertrace.io)

Gautier Lobry  
CTO at evertrace GmbH

[gautier@evertrace.io](mailto:gautier@evertrace.io)





**PHYSICAL DAMAGE 22%**



**THEFT 22%**

**WHAT ARE THE MAIN REASONS  
FOR CARGO DAMAGES DURING TRANSIT?**



**TEMPERATURE DEVIATION 8%**



**WATER DAMAGE 8%**



## PROBLEM

1. **Growing damage ratio and payments for losses** in the global supply chains; no one wants to have damages
2. **High operational costs** for insurance companies, brokers, shippers, freight forwarders in case of cargo damage





# evertrace

## OUR VISION

**A global supply chain where shipper and insurer benefit  
from prediction and work together  
to prevent cargo damages**



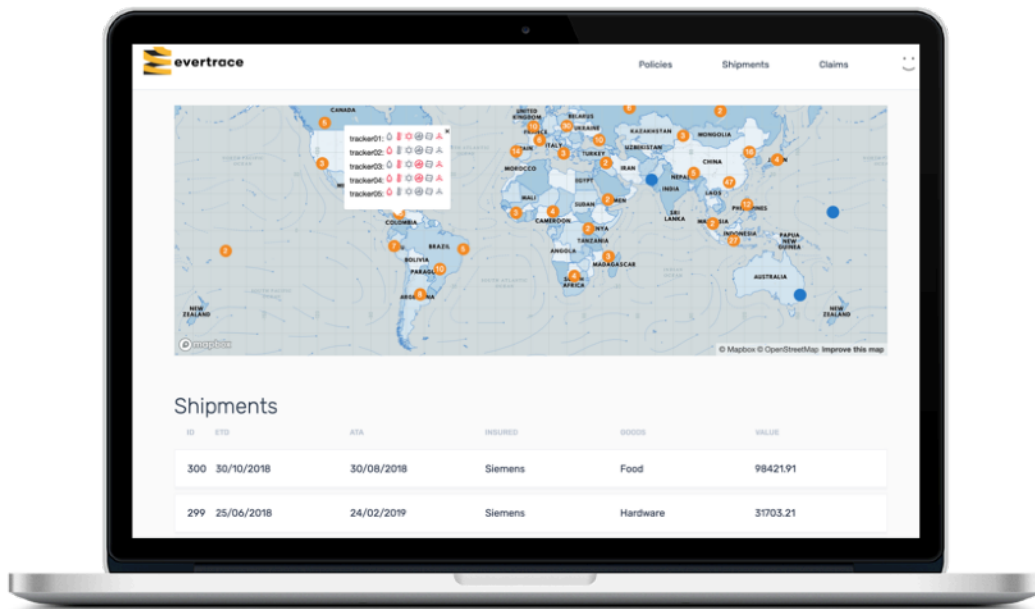
PRODUCT

Evertrace  
Track & Trace



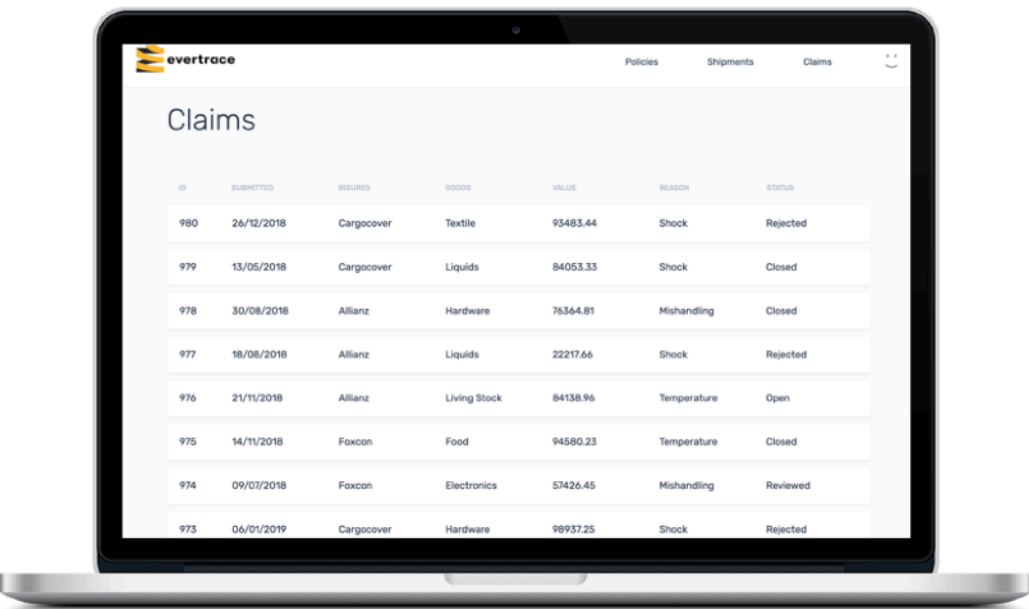
Real-time tracking  
Notifications & alerts  
Reverse logistics

Evertrace  
Dashboard



Tracking visualization  
Underwriting guidelines  
Claims automation

Risk prediction &  
damage prevention model



Risk scoring  
Risk accumulation  
Damage prevention guidelines



# EVERTRACE TRACKER SPECIFICATION



## Temperature

Tracks temperature from -15c up to +50c; +/- 1 degree accuracy



## Humidity

Monitors relative humidity between 0-100%; +/- 3.5 RH accuracy



## Location

Monitor the location of shipments with GPS accuracy worldwide



## Shock

An Alert triggered if box subject to 0.4 seconds, freefall.



## Orientation

Alert if tilt more than 30 degrees. Orientation alert when a rotation greater than 45 degrees.



## Light

Monitors opening or shipment / package. Alerts when more than 5.0 LUX



# PREVENTION OF HUMIDITY-RELATED LOSS



Reasons for humidity damages:

- Container sweat / rain
- Lack of ventilation
- Seawater leakage
- Rainwater leakage

**Evertrace features helping to prevent the damage:**

- Real-time notifications (evertrace detects potential damage based on humidity sensor values)
- Severity of damage prediction and cargo vulnerability prediction (based on the sensor values, historical records and customized risk model)

**Action plan of shipper / insurer in real-time:**

- Get in touch with a carrier to prevent further damage (eg. fix the loading, repack the goods)
- Investigate condition of the cargo en route by surveying cargo. In case of damage, reload the cargo or order a replacement



# RISK ACCUMULATION

Two main methodologies:

- Statistic model based on historical data (claims, individual and turn-over policies)
- Real-time tracking data

Maersk Honam 2018



Tianjin explosion 2015





# OUR TEAM

Evertrace GmbH is a Berlin-based startup, founded in 2018.

We are powered by Berlin-based company builder Next Big Thing AG.



**Darina Onoprienko**  
**CEO**

ex-Group leader Road  
Freight at DB  
Schenker, Logistics  
Analyst in Delphi



**Gautier Lobry**  
**CTO**

ex-CPO at Sparks42  
(Rocket Internet), VP  
Lead Architect at  
freenet



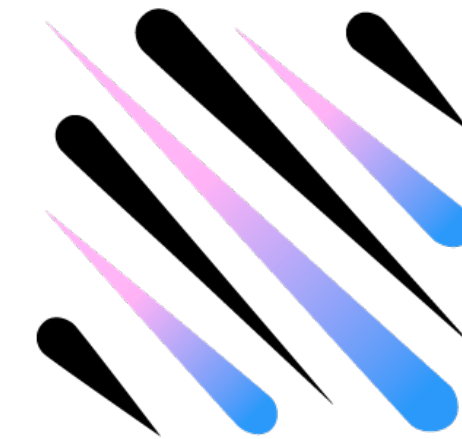
**Shashank Srivastava**  
**Data Scientist**

ex-Data Scientist at IAV,  
Software developer at  
Accenture



**Hamed Abdollahpour**  
**Senior Java developer**

ex-Senior Software  
engineer in Web Presence  
in China



**Senior Tech team of**  
**Next Big Thing AG**

Senior Backend and  
Frontend developers,  
Embedded Systems  
engineers



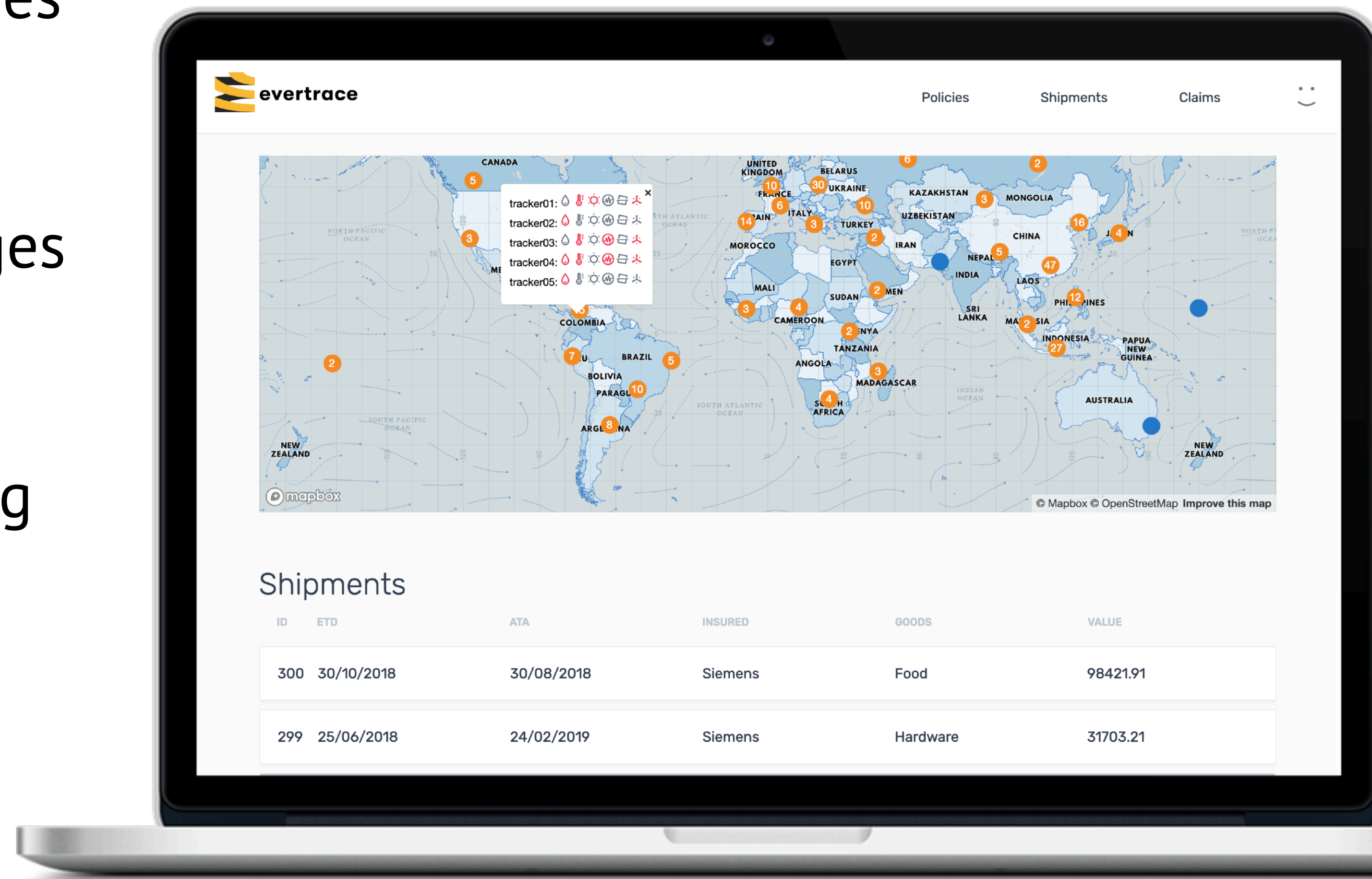
# SOLUTION

A platform for insurance companies and cargo brokers to:

- Track goods in real-time
- Predict risk and prevent damages
- Improve risk selection and automate claims

with the help of Machine Learning and IoT technologies

That's **evertrace**





# GET IN TOUCH WITH US!

**Darina Onoprienko**  
CEO at **evertrace**

+4917672665607  
[darina@evertrace.io](mailto:darina@evertrace.io)

evertrace GmbH  
c/o Factory Works GmbH  
Lohmühlenstrasse 65  
12435 Berlin

